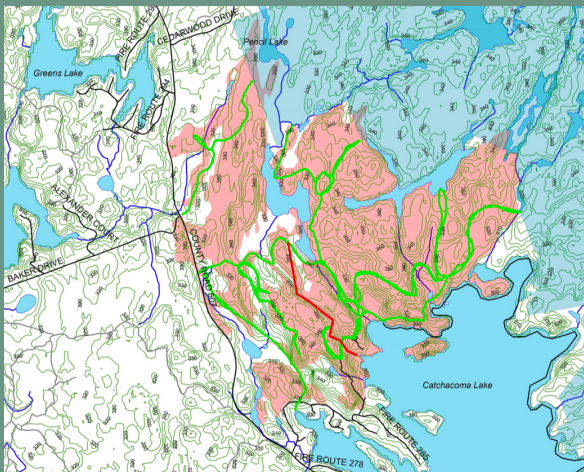




## About The Forest

In 2019, AFER discovered that the Catchacoma Forest is the largest documented old-growth eastern hemlock Forest in all of Canada. Only a 45 minute drive from Peterborough, ON, the Forest is located on the north end of Catchacoma Lake and can be accessed from a bus-friendly trailhead off of country road 507.



## A Class Visit to Catchacoma Old Growth Forest

A memorable environmental education experience!



Facilitated by Ancient Forest Exploration & Research (AFER) and the Ontario Wilderness Committee (WC)

## Learn Among Towering Hemlocks



## A Phenomenal Outdoor Classroom

The Catchacoma Forest is a classroom like no other. Guided by AFER and WC, students will have the opportunity to immerse themselves in the magical old growth and learn first-hand about tree identification, forest and wetland ecology, local species (547 species ID'd to date), and carbon storage in one of Eastern Canada's most carbon-rich temperate forests. This education experience will look different based on the age and focus of the class (Ages 6+ recommended).

## Citizen Science

If interested, it is also an option for students to learn first-hand about citizen science and fieldwork by collecting data in the Forest and learning valuable field skills using forest ecology equipment like DBH tapes and calipers.



## Activities

Other activities in the forest can include campfires and forest bathing-- a guided, meditative experience that encourages participants to slow down, reflect, and experience the forest through all their senses.

## Environmental Advocacy

As Catchacoma Forest is currently unprotected, some areas were logged in 2019-2021. Students will have the chance to walk through these logged areas on the way to the intact old-growth and learn about real-time advocacy efforts of the Catchacoma Forest Stewardship Committee (CFSC) to protect the Forest.



## About Us

AFER and WC are non-profit organizations that have been operating in Ontario for 30+ years. AFER is dedicated to research and education on Ontario old-growth forests, and WC aims to protect Canada's wild spaces and species. AFER and WC have been facilitating research, education, and advocacy in the Catchacoma Forest since 2019, bringing over 300 people into the Forest to learn about the landscape.



## Contact Us!

If you are interested in bringing a class to the Catchacoma Forest or have any questions, please contact us at:

[pquinby@ancientforest.org](mailto:pquinby@ancientforest.org)  
[katie@wildernesscommittee.org](mailto:katie@wildernesscommittee.org)

For more information about AFER and WC:

[Peterborougholdgrowth.ca](http://Peterborougholdgrowth.ca)  
[wildernesscommittee.org/ontario](http://wildernesscommittee.org/ontario)